

The background image is a photograph of a coastal landscape. It shows a sandy path or dune area with patches of dry, yellowish-brown grass. In the distance, there's a flat horizon line under a sky filled with soft, grey clouds. The overall tone is somewhat muted and atmospheric.

Outer Dowsing Offshore Wind

Environmental Statement

Chapter 13 Marine and Intertidal Archaeology

Volume 2 Figures

Date: March 2025

Document Reference: 6.2.13

Pursuant to APFP Regulation: 5(2)(a)

Revision: 2.0

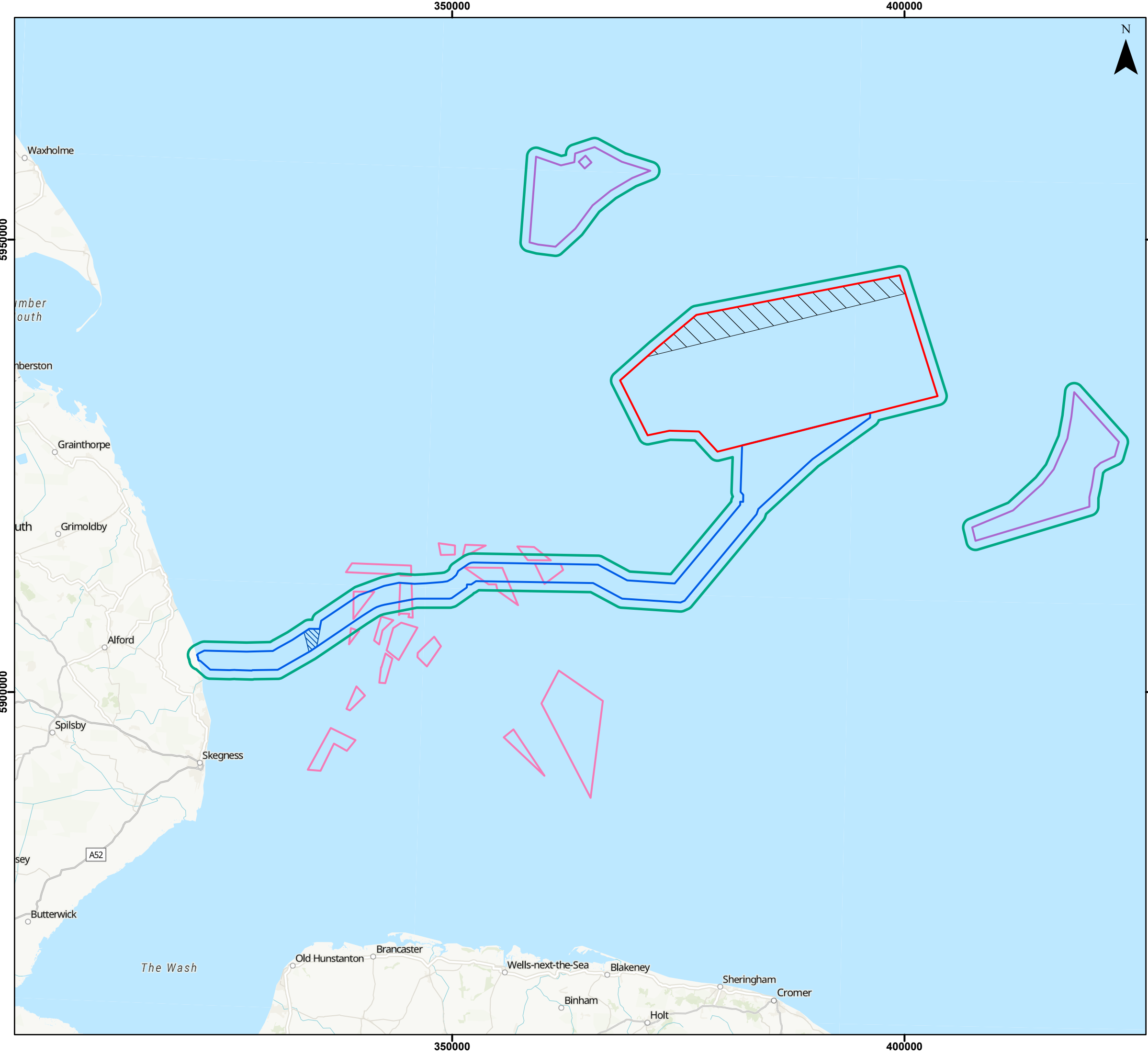
Company:		Outer Dowsing Offshore Wind		Asset:		Whole Asset	
Project:		Whole Wind Farm		Sub Project/Package:		Whole Asset	
Document Title or Description:		Chapter 13 Marine and Intertidal Archaeology					
Internal Document Number:		PP1-ODOW-DEV-CS-FIG-0013_02		3 rd Party Doc No (If applicable):		N/A	
Rev No.	Date	Status / Reason for Issue	Author	Checked by	Reviewed by	Approved by	
01	March 2024	DCO Application	GoBe	GoBe	Shepherd & Wedderburn	Outer Dowsing	
02	March 2025	Examination ES Update	GoBe	GoBe	Shepherd & Wedderburn	Outer Dowsing	

Change Log

- Examination Update: updates to reflect, where relevant: clarifications to date in Examination; correcting errata; additional commitments made through Examination; and changes to status of or addition of cumulative projects.
- Figures 13.1-13.9 inclusive have been updated to reflect the inclusion of the Offshore Restricted Build Area and removal of the Northern Export Cable Corridor route

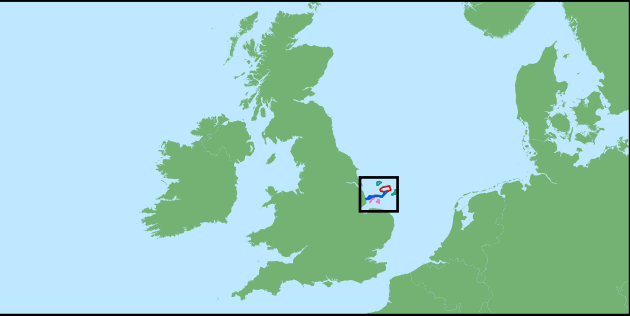
Table of Figures

- Figure 13.1 Marine Archaeology Study Area (document reference 6.2.13.1)
- Figure 13.2 Known Wrecks and Obstructions within the Marine Archaeology Study Area (document reference 6.2.13.2)
- Figure 13.3 Historic Seascape Characterisation of the Coastal Level (document reference 6.2.13.3)
- Figure 13.4 Historic Seascape Characterisation of the Sea Surface Level (document reference 6.2.13.4)
- Figure 13.5 Historic Seascape Characterisation of the Water Column Level (document reference 6.2.13.5)
- Figure 13.6 Historic Seascape Characterisation of the Seafloor Level (document reference 6.2.13.6)
- Figure 13.7 Historic Seascape Characterisation of the Sub Seafloor Level (document reference 6.2.13.7)
- Figure 13.8 Geophysical Anomalies of Archaeological Potential with the Array Area and Offshore ECC (document reference 6.2.13.8)
- Figure 13.9 Records and Geoarchaeological Features within the Array Area (document reference 6.2.13.9)



Legend

- Array Area
- Offshore Restricted Build Area
- Offshore Export Cable Corridor
- 1km Buffer
- ORCP Area
- Artificial Nesting Structure Area
- Biogenic Reef Restoration Area



Coordinate System: WGS 1984 UTM Zone 31N

0 10 20 km

Scale: 1:400,000 A3 Page Size

Environmental Statement Version 2 Deadline 5

Marine Archaeology Study Area

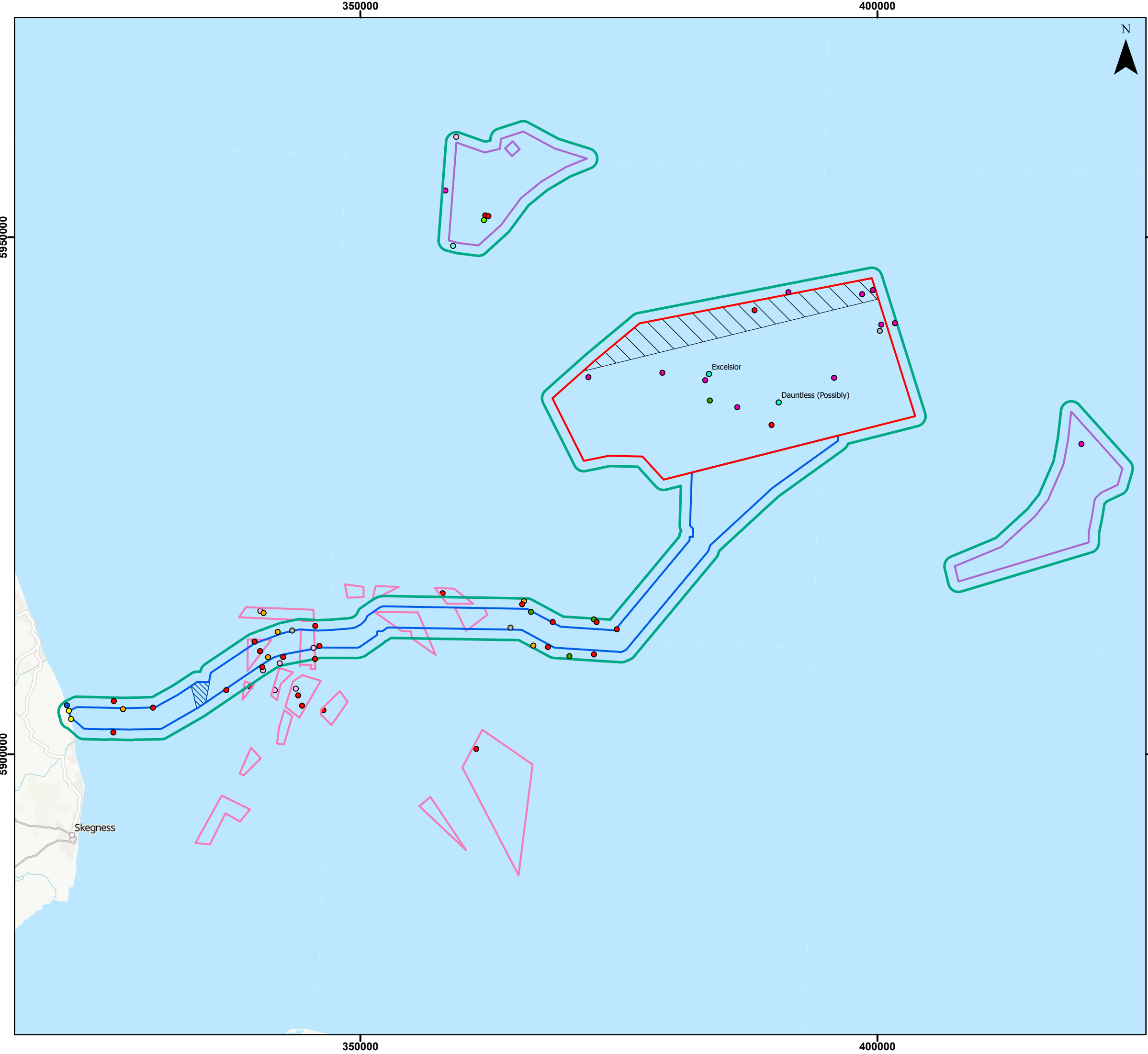
Figure 13.1



Date: 14/02/2025
Produced By: LR
Revision: 2.0



Contains ESRI Basemapping; World
Topographic Map; Sources: Esri,
TomTom, Garmin, FAO, NOAA, USGS,
© OpenStreetMap contributors, and the
GIS User Community



Legend

- Array Area
- Offshore Restricted Build Area
- Offshore Export Cable Corridor
- 1km Buffer
- ORCP Area
- Artificial Nesting Structure Area
- Biogenic Reef Restoration Area

Array and ECC Known Archaeology: Period

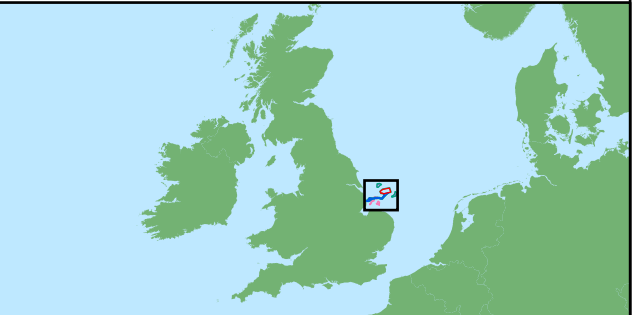
- Roman
- Medieval
- Post-Medieval
- WWI
- WWII
- Post-WWII
- Foul Ground
- Obstruction
- Unknown

Nesting Area Known Archaeology: Period

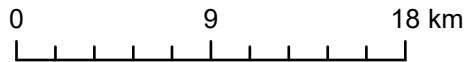
- Post-Medieval
- WWI
- Early 20th Century
- Foul Ground
- Unknown

Reef Area Known Archaeology: Period

- WWI
- WWII
- Unknown



Coordinate System: WGS 1984 UTM Zone 31N



Scale: 1:350,000 A3 Page Size

Environmental Statement Version 2 Deadline 5

Known Wrecks and Obstructions within the Marine Archaeology Study Area

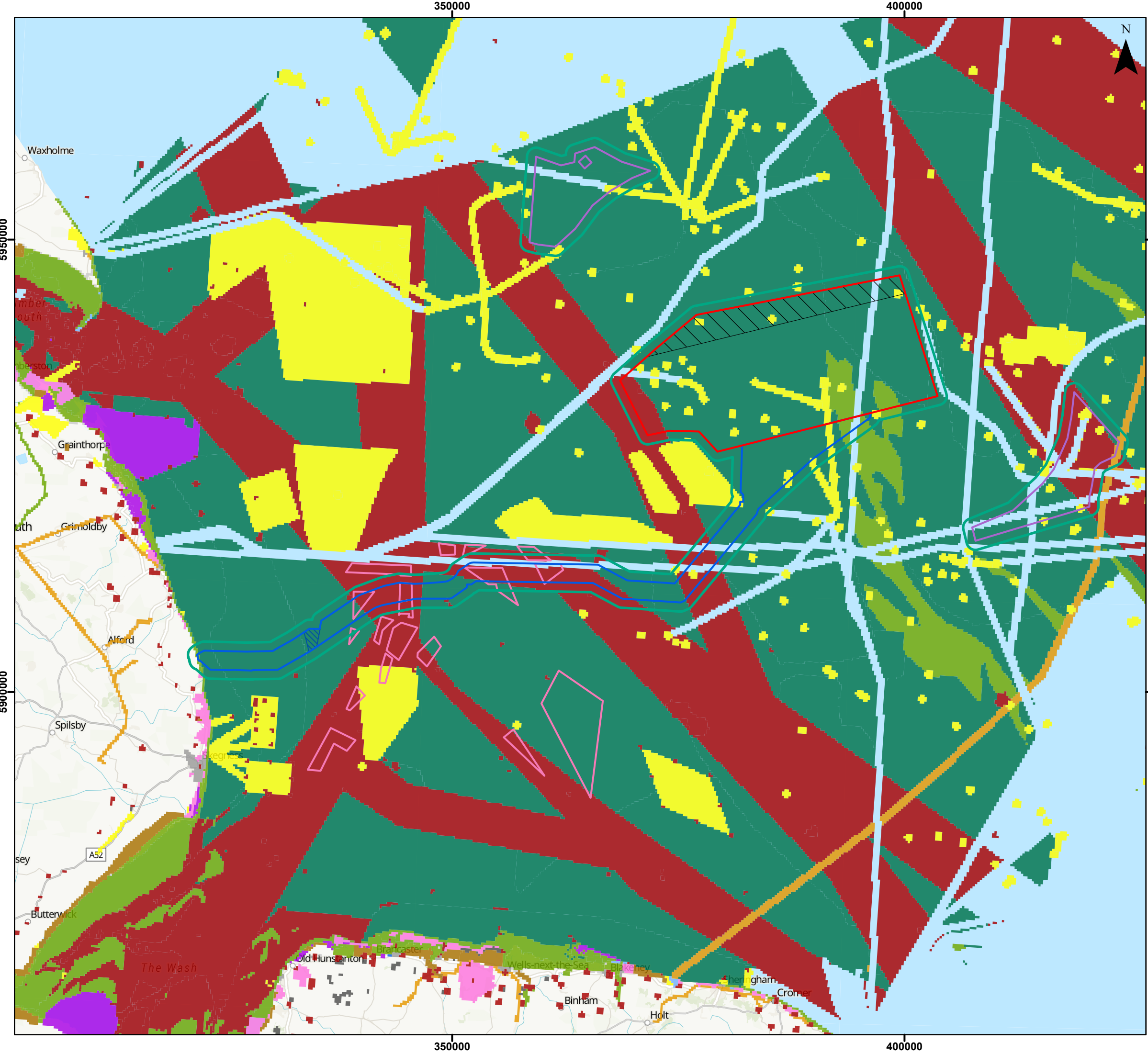
Figure 13.2



Date: 14/02/2025
Produced By: LR
Revision: 2.0



Contains ESRI Basemapping; World Topographic Map: Sources: Esri, TomTom, Garmin, FAO, NOAA, USGS, © OpenStreetMap contributors, and the GIS User Community

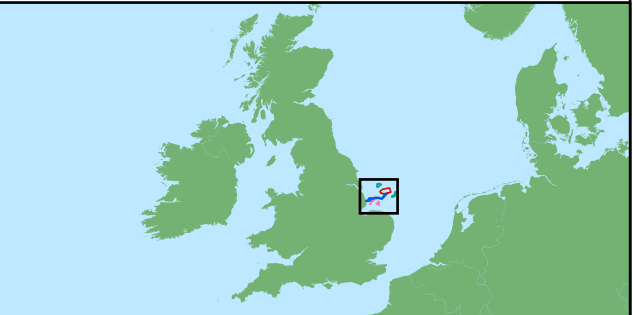


Legend

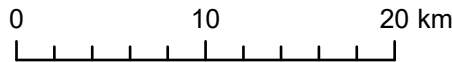
- Array Area
- Offshore Restricted Build Area
- Offshore Export Cable Corridor
- 1km Buffer
- ORCP Area
- Artificial Nesting Structure Area
- Biogenic Reef Restoration Area

Type

- Fishing
- Cultural Topography
- Ports and Docks
- Navigation
- Industry
- Settlements
- Woodland
- Communications
- Enclosed Land
- Coastal Infrastructure
- Military
- Unimproved Land
- Recreation



Coordinate System: WGS 1984 UTM Zone 31N



Scale: 1:400,000

A3 Page Size

Environmental Statement Version 2 Deadline 5

Historic Seascape Characterisation of the Coastal Level

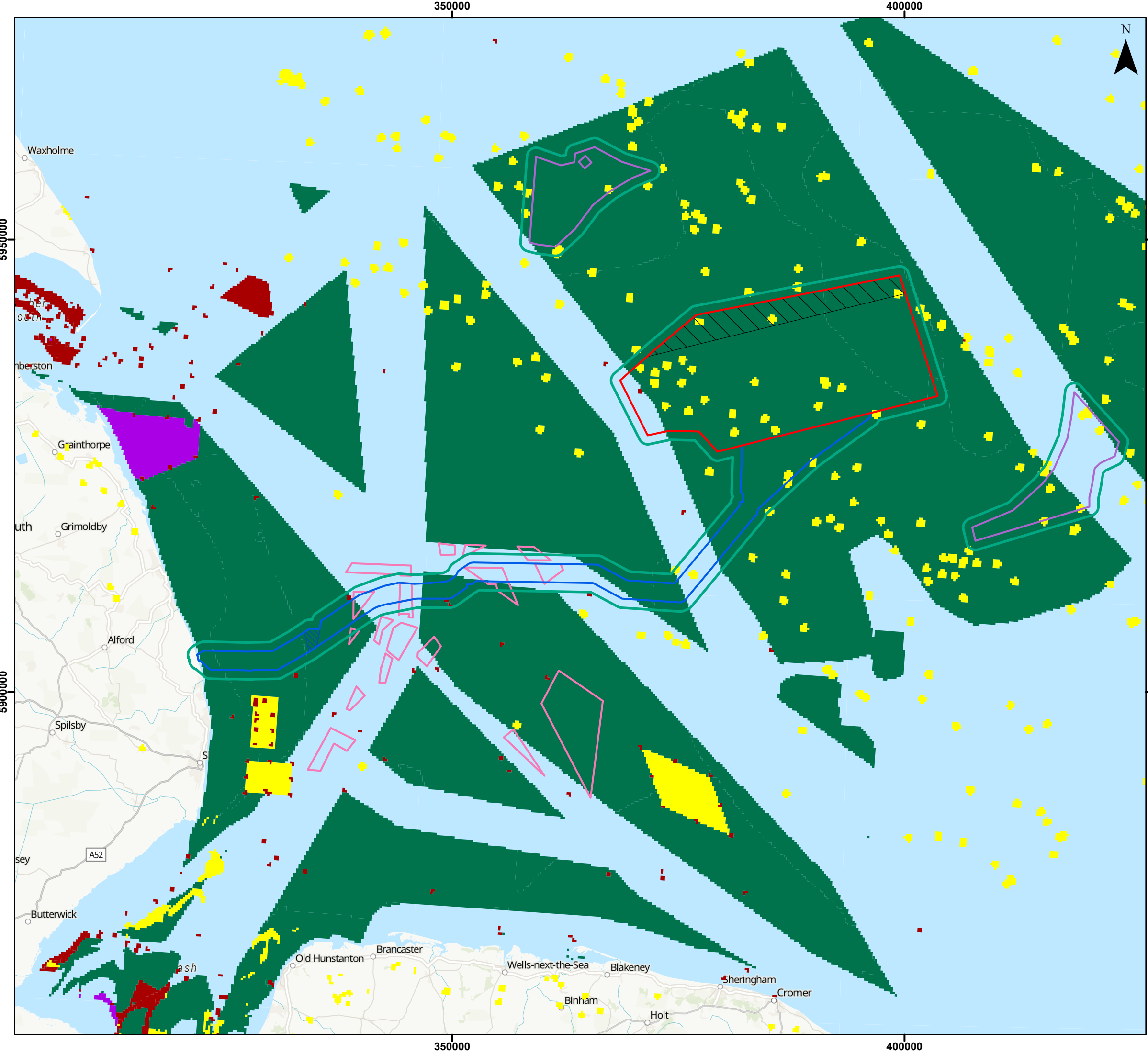
Figure 13.3



Date: 14/02/2025
Produced By: LR
Revision: 2.0



Contains ESRI Basemapping; World Topographic Map; Sources: Esri, TomTom, Garmin, FAO, NOAA, USGS, © OpenStreetMap contributors, and the GIS User Community

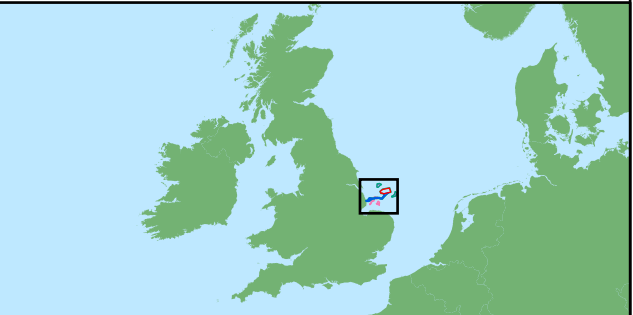


Legend

- Array Area
- Offshore Restricted Build Area
- Offshore Export Cable Corridor
- 1km Buffer
- ORCP Area
- Artificial Nesting Structure Area
- Biogenic Reef Restoration Area

Type

- Fishing
- Navigation
- Industry
- Military
- Recreation



Coordinate System: WGS 1984 UTM Zone 31N
0 10 20 km
Scale: 1:400,000 A3 Page Size

Environmental Statement Version 2 Deadline 5

Historic Seascape Characterisation of the Sea Surface Level

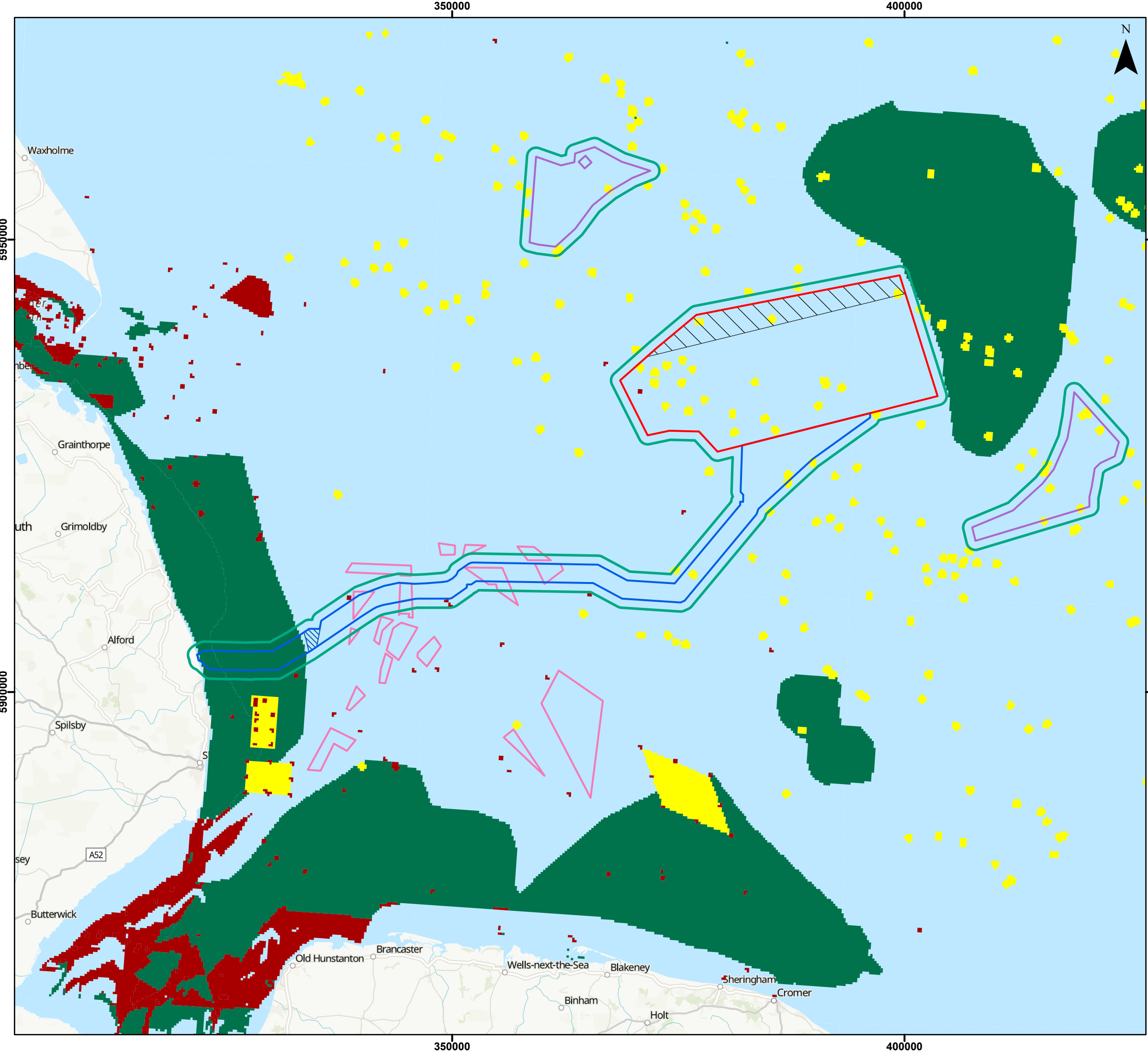
Figure 13.4



Date: 14/02/2025
Produced By: LR
Revision: 2.0



Contains ESRI Basemapping; World Topographic Map; Sources: Esri, TomTom, Garmin, FAO, NOAA, USGS, © OpenStreetMap contributors, and the GIS User Community

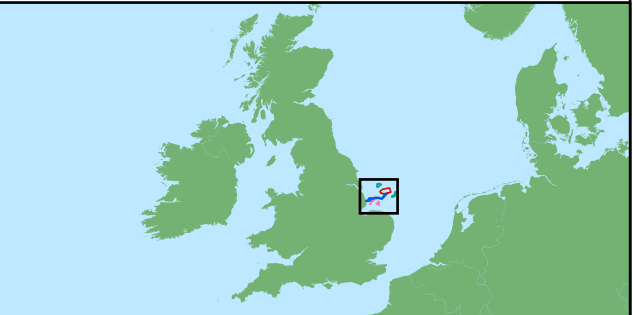


Legend

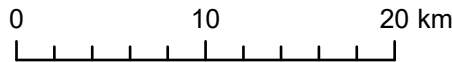
- Array Area
- Offshore Restricted Build Area
- Offshore Export Cable Corridor
- 1km Buffer
- ORCP Area
- Artificial Nesting Structure Area
- Biogenic Reef Restoration Area

Type

- Fishing
- Navigation
- Industry
- Military



Coordinate System: WGS 1984 UTM Zone 31N



Scale: 1:400,000

A3 Page Size

Environmental Statement Version 2 Deadline 5

Historic Seascape Characterisation of the Water Column Level

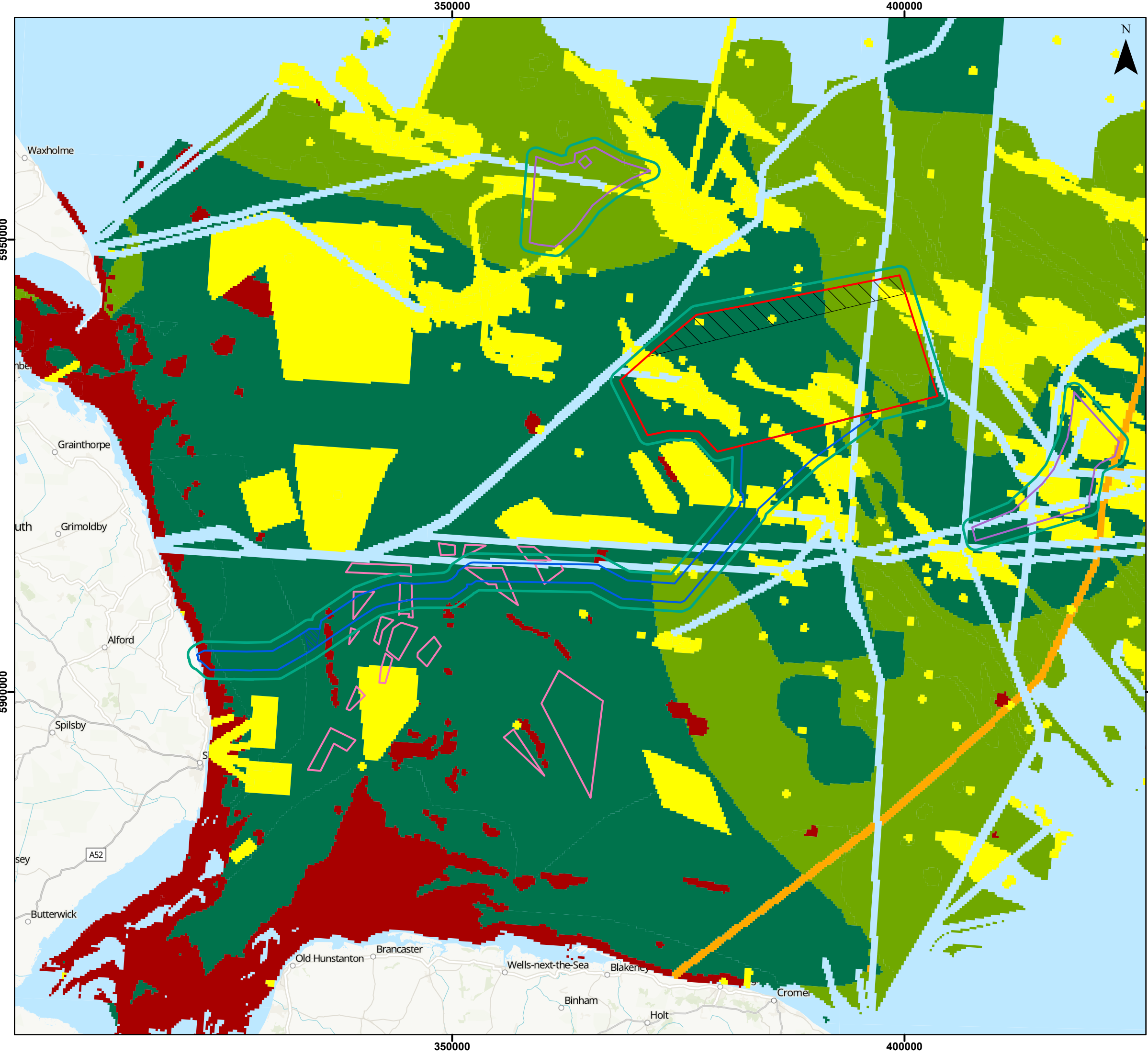
Figure 13.5



Date: 14/02/2025
Produced By: LR
Revision: 2.0



Contains ESRI Basemapping; World Topographic Map; Sources: Esri, TomTom, Garmin, FAO, NOAA, USGS, © OpenStreetMap contributors, and the GIS User Community

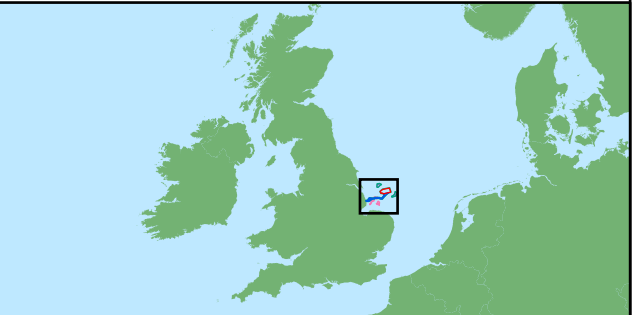


Legend

- Array Area
- Offshore Restricted Build Area
- Offshore Export Cable Corridor
- 1km Buffer
- ORCP Area
- Artificial Nesting Structure Area
- Biogenic Reef Restoration Area

Type

- Fishing
- Cultural Topography
- Navigation
- Industry
- Communications
- Military



Coordinate System: WGS 1984 UTM Zone 31N

0 10 20 km

Scale: 1:400,000

A3 Page Size

Environmental Statement Version 2 Deadline 5

Historic Seascape Characterisation of the Seafloor Level

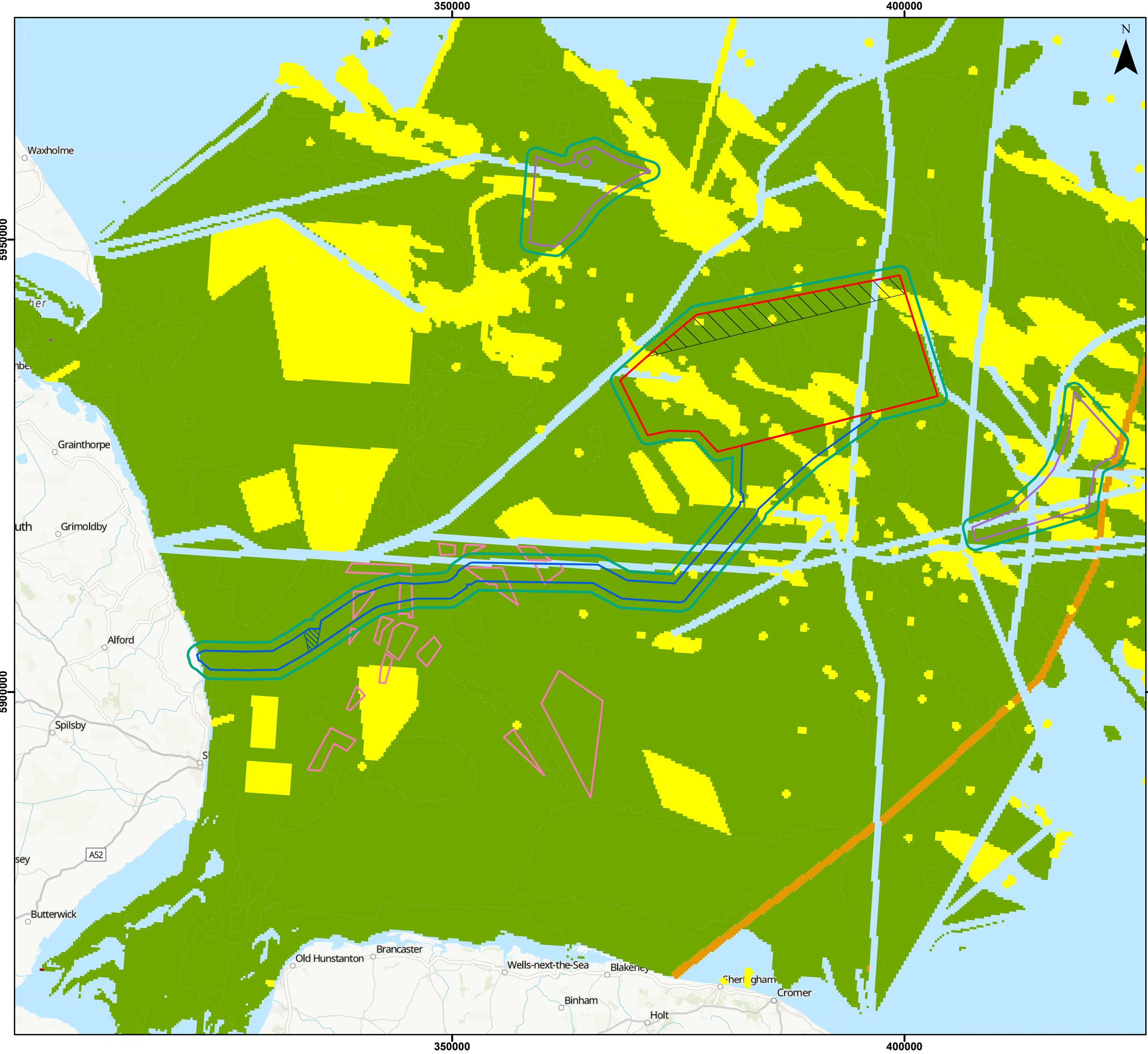
Figure 13.6



Date: 14/02/2025
Produced By: LR
Revision: 2.0



Contains ESRI Basemapping; World Topographic Map; Sources: Esri, TomTom, Garmin, FAO, NOAA, USGS, © OpenStreetMap contributors, and the GIS User Community

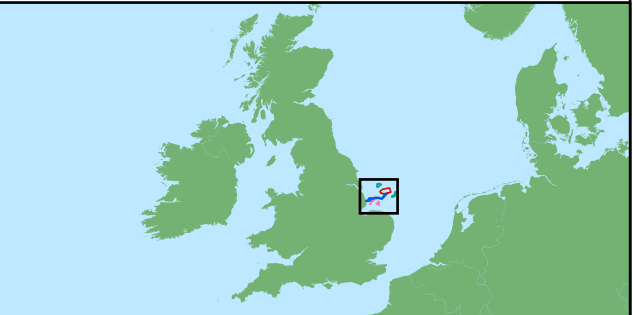


Legend

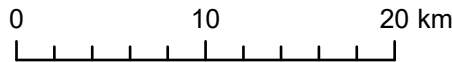
- Array Area
- Offshore Restricted Build Area
- Offshore Export Cable Corridor
- 1km Buffer
- ORCP Area
- Artificial Nesting Structure Area
- Biogenic Reef Restoration Area

Type

- Fishing
- Cultural Topography
- Industry
- Communications
- Military
- Navigation



Coordinate System: WGS 1984 UTM Zone 31N



Scale: 1:400,000 A3 Page Size

Environmental Statement Version 2 Deadline 5

Historic Seascape Characterisation of the Sub Seafloor Level

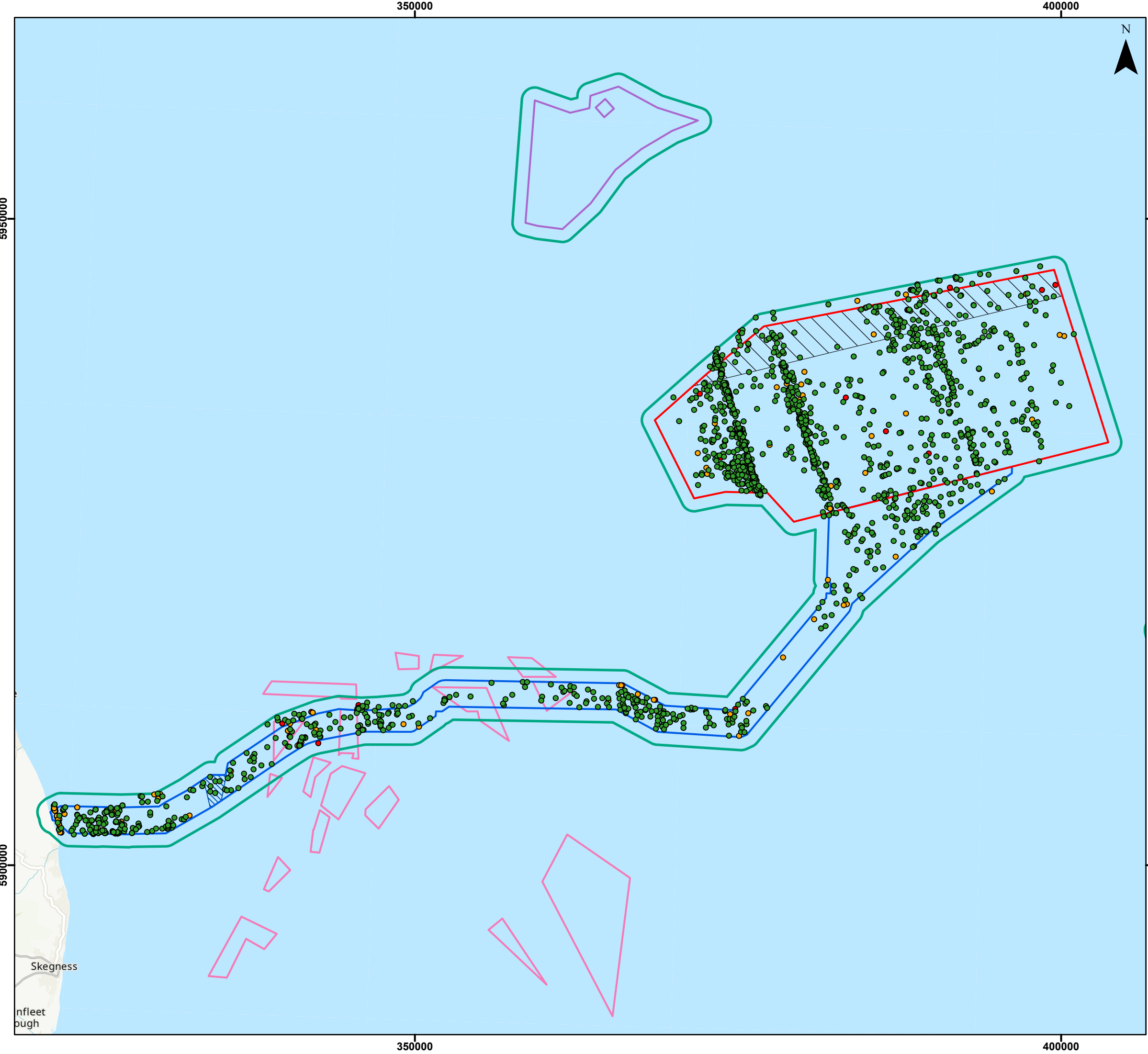
Figure 13.7



Date: 14/02/2025
Produced By: LR
Revision: 2.0



Contains ESRI Basemapping; World Topographic Map; Sources: Esri, TomTom, Garmin, FAO, NOAA, USGS, © OpenStreetMap contributors, and the GIS User Community

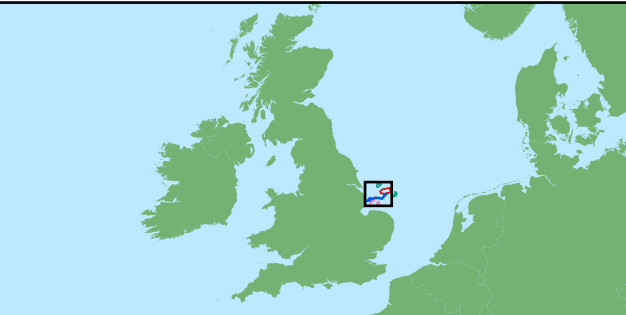


Legend

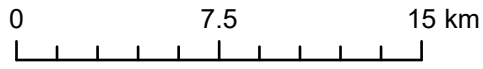
- Array Area
- Offshore Restricted Build Area
- Offshore Export Cable Corridor
- 1km Buffer
- ORCP Area
- Artificial Nesting Structure Area
- Biogenic Reef Restoration Area

Archaeological Potential

- High
- Medium
- Low



Coordinate System: WGS 1984 UTM Zone 31N



Scale: 1:280,000

A3 Page Size

Environmental Statement Version 2 Deadline 5

Geophysical Anomalies of Archaeological Potential with the Array Area and Offshore ECC

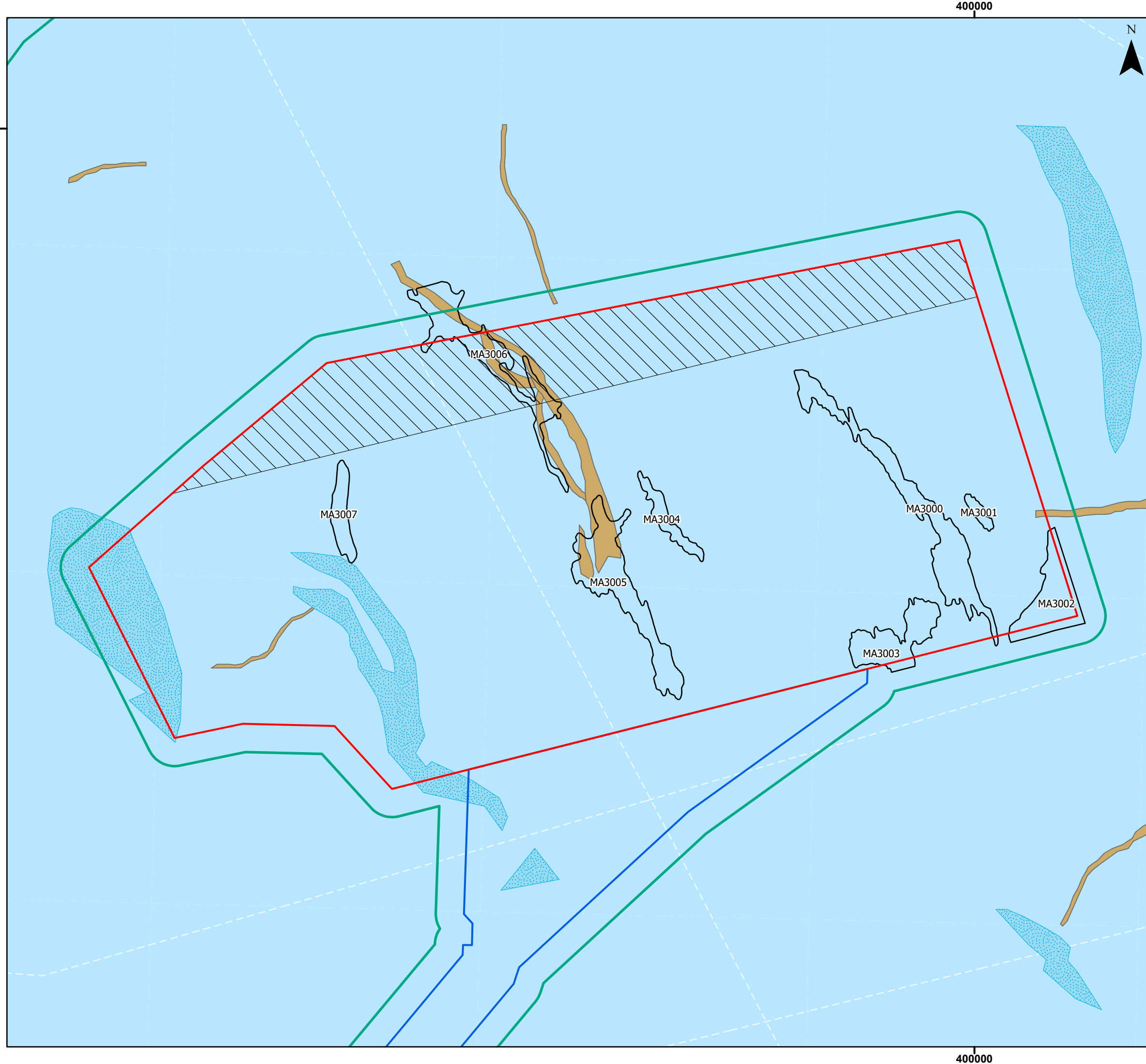
Figure 13.8










Date: 14/02/2025
Produced By: LR
Revision: 2.0



Contains ESRI Basemapping; World Topographic Map; Sources: Esri, TomTom, Garmin, FAO, NOAA, USGS, © OpenStreetMap contributors, and the GIS User Community



Legend

-  Array Area
-  Offshore Restricted Build Area
-  Offshore Export Cable Corridor
-  1km Buffer
-  SBP Palaeochannels (MA3000-MA3007)
-  NSPP Lakes
-  NSPP Fluvial Channels



Coordinate System: WGS 1984 UTM Zone 31N

0 3.5 7 km

Scale: 1:130,000

A3 Page Size

Environmental Statement Version 2 Deadline 5

Records and Geoarchaeological Features within the Array Area

Figure 13.9



Date: 14/02/2025
Produced By: LR
Revision: 2.0



Contains ESRI Basemapping; World Topographic Map: Sources: Esri, TomTom, Garmin, FAO, NOAA, USGS, © OpenStreetMap contributors, and the GIS User Community